



Mother Nature – The myth of Gaia

with Katrina Koltés



Supplies



- *Watercolor paper (I used hot press, 12x16' but please use whatever you are comfortable with)*
- *Watercolors (A basic set will do. Better to get a few good quality basic colors than tons of colors in a low-quality grade. I used mostly the new Jane Davenport sets - Natural Palette and Bright palette.)*
- *Paintbrushes (It's good to have at least a medium sized soft round and fine liner for details)*
- *Color pencils (I used the Prisma color pencils but any soft color-pencils will do!)*
- *White gel pen (a great one is the Uni-bal Signo Mitsubishi pen)*
- *Plastic wrap & kitchen salt*
- *Stencils (optional)*
- *Colorless masking fluid (I used Windsor Newton, which is a great brand, but please use whatever you have on hand.)*
- *An old brush or silicon clay tool (this is what I use) to apply the masking fluid.*
- *A graphite pencil and eraser for the sketch.*



Hello beautiful artists!

Welcome to my lesson!

I'm so happy to be here with you all and share my chosen fairytale/myth with you!

Mother Nature, or Gaia, as she was known in Greek mythology, was one of the first Goddesses. According to myth, nature and life sprang from her womb. She personifies the entire ecosystem and Planet Earth, and is always working to achieve balance, harmony and peace within the environment. I can't help but feel that with all that is happening in the world today, we need more of Mother Nature's healing energy and harmony. She is the goddess and protector of animals and of delicate new life.

There is so much to learn from her, and I hope she inspires you too to delve into the magic of nature and all the beauty that surrounds us.

So let's begin shall we?

Xox,

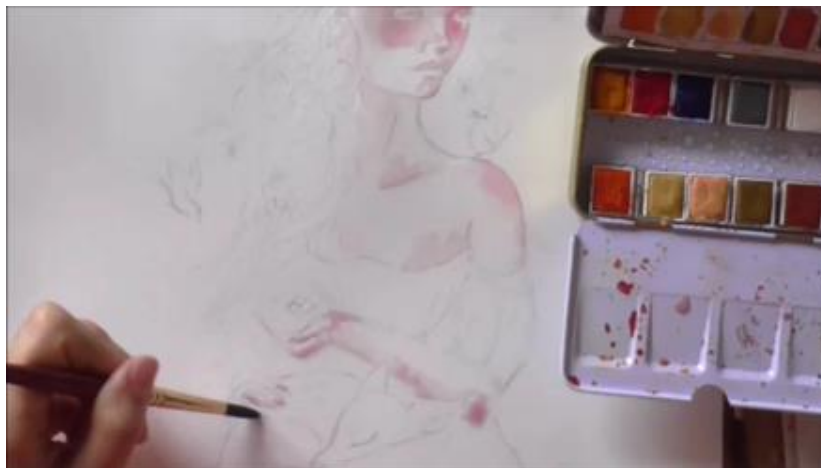


Katrina



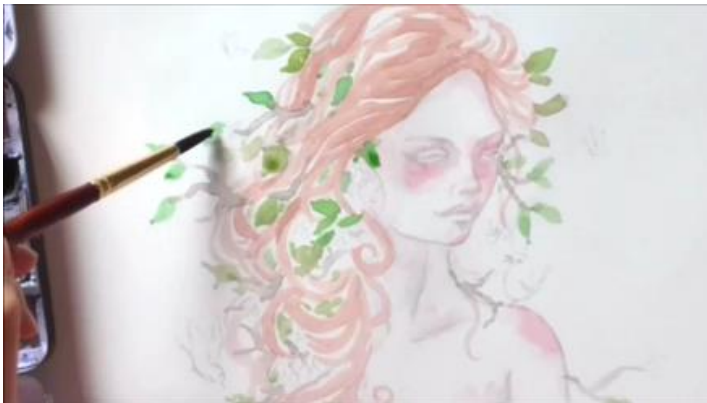
1). Once you have your supplies together, let's begin drawing! You can make a sketch in your sketchbook first if you like, so that you have an idea of how you will place things. It's always better not to have to erase tons on hot-press paper as it could run off paper fibers after numerous erases.

2). Next, we add a layer of color to the face. I mixed a skin tone with some pink and orange, and just a dab of purple to create a rosy tone to start with.



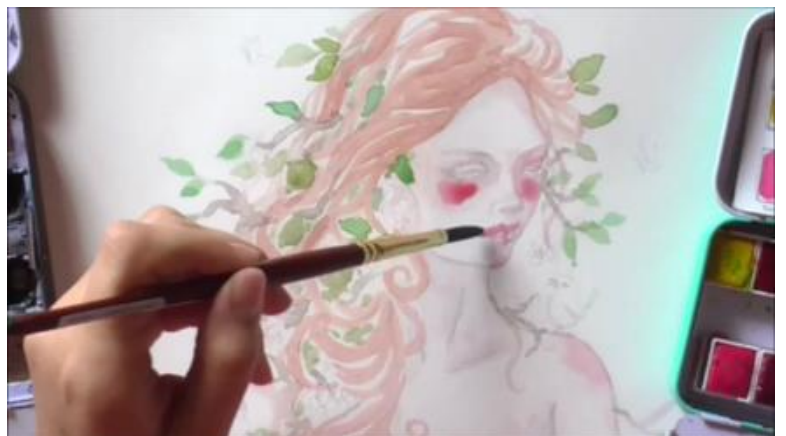
3). I add that to the rest of her body as well, making sure to leave the paper white where the highlights would be.

4) Now we begin to paint her hair a reddish-brown color. I'm painting it in waves and strands, more or less the way the hair would fall, leaving spaces in-between to add leaves later.

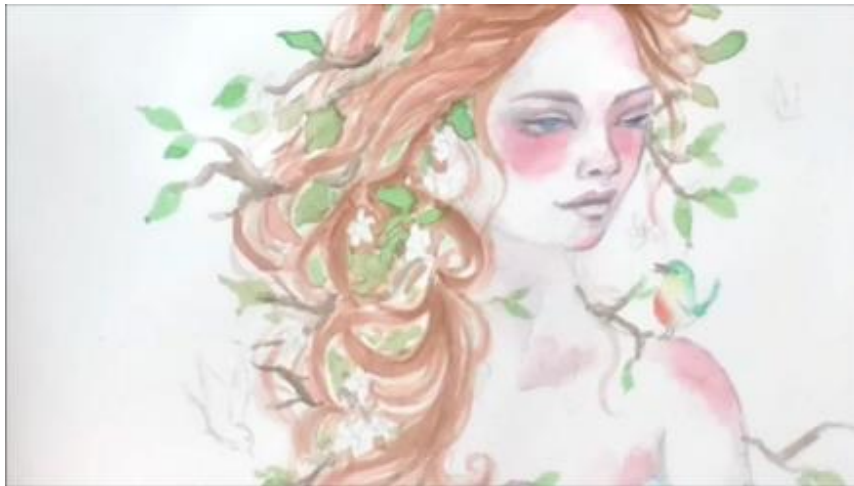


5) Now we can begin to add some branches with a darker tone, then adding the leaves to those branches, using a variety of light green, dark green and the reddish brown mixed in.

6) Now that her face is dry we can add more layers. First I accentuate her cheeks and lips with a bright pink... And proceed to add some shadow with the purple in the areas such as under the nose and lips, between the eyes and bridge of the nose, under the hair line, etc.

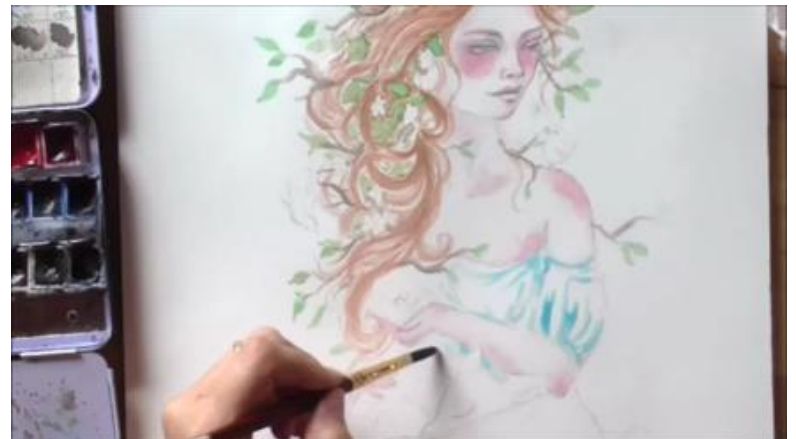


7) I continue to add another layer to her hair with a slightly darker brown, especially where the shadow would fall.



8) Next, I add details to her face like the eyes, nose, brows and lips. I'm using a diluted mixture of indigo, purple and dark brown. I'm painting her eyes slightly open so that she can be looking and talking to the little Robin on her shoulder.

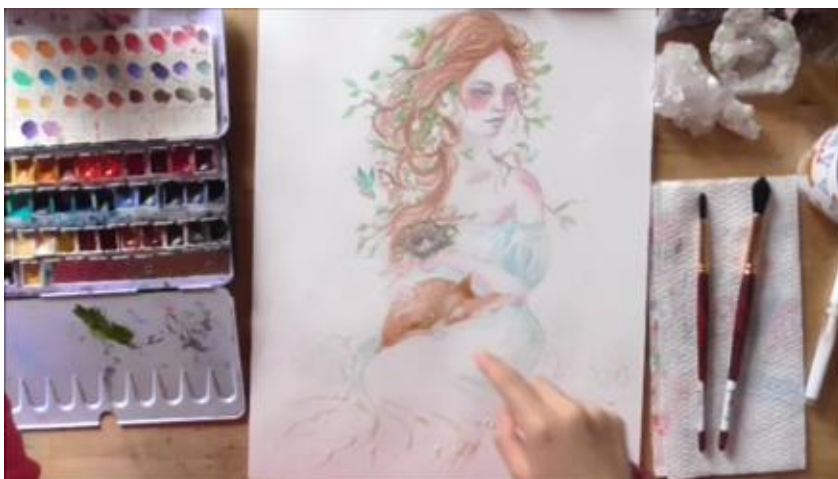
9) I also move on to lightly outlining her arms and body, just make sure it's light, we don't want it to look cartoonish... You can also add some color to the folds of her dress to indicate the shadow. I'm deciding here to use a light blue mixed with a tiny bit of purple.





10) Next, we add some masking fluid to the bottom of her dress. I want to imitate roots, so we keep that in mind. I also add some on the spots and eye of the fawn. Now let's leave it to dry!

11) While the masking fluid is drying, we can paint the birds and the nest. You can go with your imagination here, use whatever colors you like. ;P



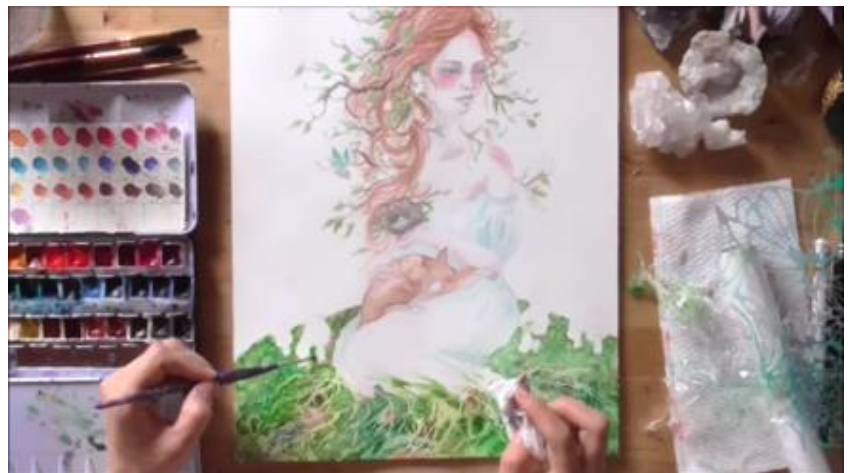
12) Now we can add the first layer to the fawn. I flick some water drops near the top where it should be lighter with clean water on my brush.

13) · And while we leave that to dry we can add the grass. I used a mixture of sap green, dark green, and reddish brown. Make sure to add enough water when we lay our stencils and/or plastic wrap down.



14) Next I move up and add more branches and leaves to her hair

15) · Once the grass is dry we can take off the texture elements and soften the edges of the mushrooms by 'scrubbing' lightly (don't use your best paintbrush for this!) with clean water then dabbing with a paper towel.





16). We can then remove the masking fluid if the paper is completely dry.

17). I also add some little dots of masking fluid to the sky for stars, and draw a moon crescent up in the right corner. The moon symbolizes magic, femininity, intuition, and helps nature's cycles.



18). Now that the fawn is also dry I remove the masking fluid and finish painting him. I paint with a darker brown his hooves, nose and lashes, etc. I'm also adding some more shadow inside the nest with the same brown.

19)· Next I soften the roots in the same way I did with the mushrooms· Then I'm adding some even thin roots with the white gel pen·



20)· I then lightly outline the magnolia flowers and add a blush of pink and yellow to their centers·

21)· I want to make her hair look quite realistic so I'm adding some darker strands with the dark brown in the areas where there would be shadow· I also add some shadow to her dress with a dark violet·





22). Next, we start to paint the sky. First we wet the area we want to add the color, so that it will spread more organically. We want to avoid the area closer to her head, as to leave a 'glow' effect and not have the blue seep into the flowers and leaves. Once our paper is wet, we can mix up some bright blue, purple and Indigo and drop that in. As we move towards her, we thin out the color out with a clean brush, and dab the end so as not create 'harsh edges'. Make sure to move your paper around so that it doesn't create puddles in some areas. Next, I take a small brush with some clean water and flick it over the surface, creating some texture in the sky, which we will later accentuate with the 'lifting out' technique.



23) · While that layer is drying I paint the little red and white mushrooms. Remember to leave little spots white, or crate them after with the white gel pen.

24)· Now that the sky is dry I add a second layer to the corners with Indigo, to accentuate the 'glowing effect' even more. As I move towards the center I spread out that color with a clean brush.



25)· Next I add some larger leaves, and drips too, just for fun ;P



26)· I also add a darker second layer to the outside of the ground area to accentuate the glow effect and bring the eye to the center and main focus of the painting.





27). Now that the sky is dry, we can remove the masking fluid for the stars, and we soften that rubbing into it with a clean slightly wet brush and dab it, (just like we softened the roots earlier on). I also lift off some color, using the same technique, in some of

the areas where we dripped and flicked in the clean water. Then I add some smaller star clusters with the white gel pen.

28). As a last little extra I decide to add some little violets and splash some of the light purple over that as well, just to create a little movement 😊





29.) *Last but not least, I take some color pencils in the same shades or slightly darker than the colors I used and add some details here and there..*



30.) *I create some darker strands in her hair, veins in the leaves, and I also darker her lash line, brows, and lips. I also accentuate the nest, fawn, and mushrooms.*



And she's done! I hope you enjoyed creating with me! Xox, Katrina ☺

www.katrinakoltes.com

