

ART WALK ALCHEMY

2020

Rewilding

A tutorial with Katrina Koltes

SUPPLY LIST

- 1) **Small canvas, wood panel, or your journal**
- 2) **Pastel pencil** like light blue or green
- 3) **Acrylics**: You only need a few colors of your choice. These are the ones I used: Titanium white, cobalt turquoise, hookers green, lime green, mars yellow, raw umber, burnt sienna, Payne's gray, burnt orange, green gold
- 4) Various sized **Paintbrushes** (at least one large for the background and a medium round for the trees, plus a fine liner for details)
- 5) **Palette** for mixing colors
- 6) **Water jar, napkins or rag**

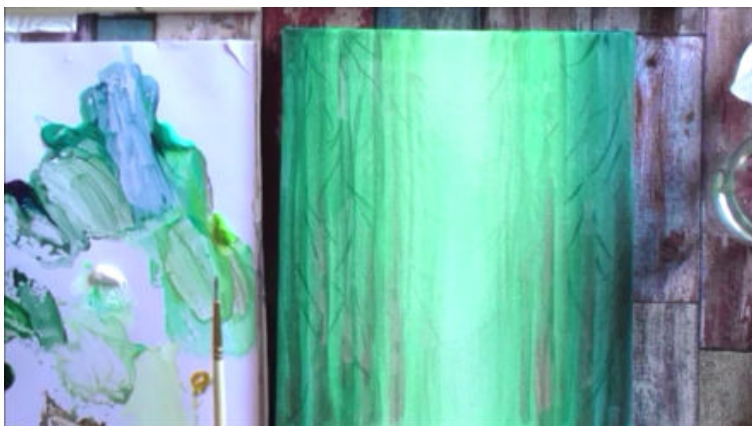
Creating the painting

Step 1



We begin by painting a wash of color starting lighter in the center and gradually going darker towards the sides. I used a mixture of teal, lime green, & titanium white for the lightest part, adding a little turquoise & prussian blue as we fade outwards. Remember to use lots water to dilute the colors well.

Step 2



Next we paint the trees in the distance. To give it perspective we fade them out towards the center and darken them towards the sides, gradually getting thicker as well.

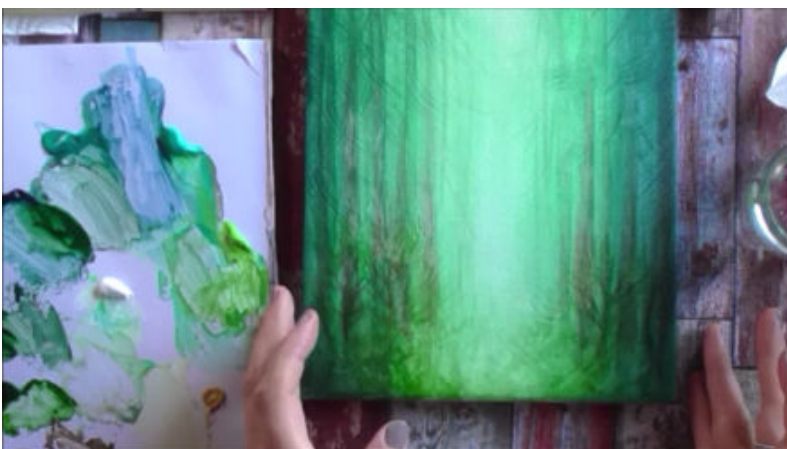
We also add some little branches pointing downwards with a thin line brush, and a touch of raw umber and burnt sienna to the trees closer to us.

Step 3



We also create the pine branches on the top of the trees, making sure to keep them light still as we are working on the background. I use the same colors I used for the trees but with a little more sap green mixed in. As you move towards the center dilute the paint more.

Step 4



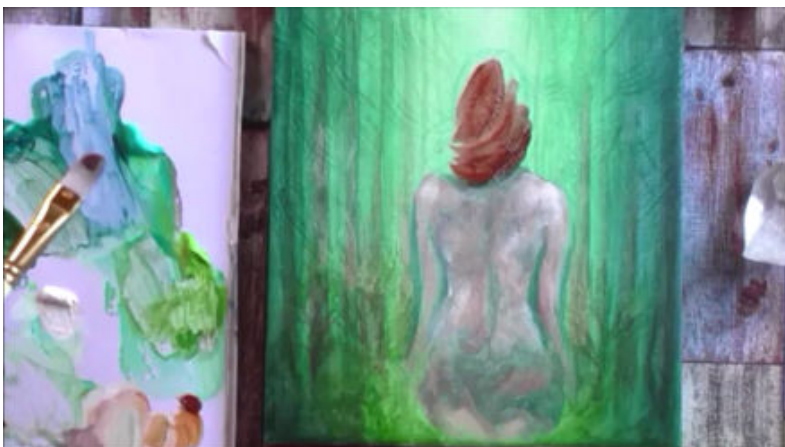
With a warmer green we can start adding the forest ground and some small trees in the background. Young trees tend to have the branches pointing upwards instead of downwards, as opposed to the adult trees. I leave the center quite light as I will place the figure there.

Step 5



Now that we have the background covered (make sure to wait till it's completely dry) we can start drawing our figure with a pastel pencil.

Step 6



With the same colors as we used in the background we paint the shadows in her skin tone, then with the mars yellow, titanium white and the reddish brown we paint the warmer skin tones. We also add a base layer for her hair, which we will add more depth in the next step.

Step 7



With a thin liner brush we add some thinner strands to her hair to create volume, both with lighter and darker shades of the base color. We also add some leaves and white little flowers. We also paint her dress. With a hard brush we dry-brush on the titanium white (without thinning it) and add some highlights to her body as well as some darker depth with Payne's gray.

Step 8



Next we paint the tree on her back with a mix for the two umbers, and a little Payne's gray. We add some of that burnt umber to the tree trucks and her body as well to bring some warmth around the painting.

Step 9



As a final touch we paint some branches in the foreground with warm green tones to bring it forward, and some little white flowers that we had added to her hair. We paint some lighter green branches on the top tree pines as well. And since I love sparkles and fireflies I decided to add some of that too to give it a magical touch...Just because! :D

I hope you enjoyed creating with me!

Remember to be gentle with yourself, just play and enjoy the journey. Always tune into your intuition and let it lead the way, because that's when the magic happens!

I'll be looking forward to seeing your work in the Facebook group. Don't forget to tag me if you have any questions, I am happy to help!

Much love,

Katrina

CONTINUE YOUR JOURNEY WITH ME:

Website (free tutorials, retreats, workshops): <https://katrinakoltes.com/>

Facebook page: <https://www.facebook.com/creatingmagic/>

Facebook community: <https://www.facebook.com/groups/540740159626914/>

Instagram: <https://www.instagram.com/katrinakoltes/>

Youtube channel: <https://www.youtube.com/user/katekoltes>